

	BALUSTRADY SCHODY POT
--	-----------------------

OZNACZENIE	B9
------------	----

SCHEMAT

The drawing consists of two parts: a plan view (top) and a cross-section view (bottom).

Plan View (Top): Shows a drainage system layout. A central horizontal line represents the main drainage pipe, with a diameter of 564.5. A vertical dashed line indicates the centerline. To the right, four parallel lines represent secondary drainage paths, each with a downward slope. The elevations for these paths are: +0.88=351.88, +0.58=351.58, +0.28=351.28, and -0.02=350.98. A label 'B9' is positioned near the top right. The entire plan view is enclosed in a dashed blue border.

Cross-section View (Bottom): Shows a vertical cross-section of the drainage system. The top part is a horizontal pipe with a diameter of 564.5. Below it, a series of vertical lines represent the drainage paths. The vertical dimensions are: 12 (top section), 110 (middle section), and 13 (bottom section). A label 'B9' is positioned near the top left. The cross-section view is enclosed in a dashed blue border.

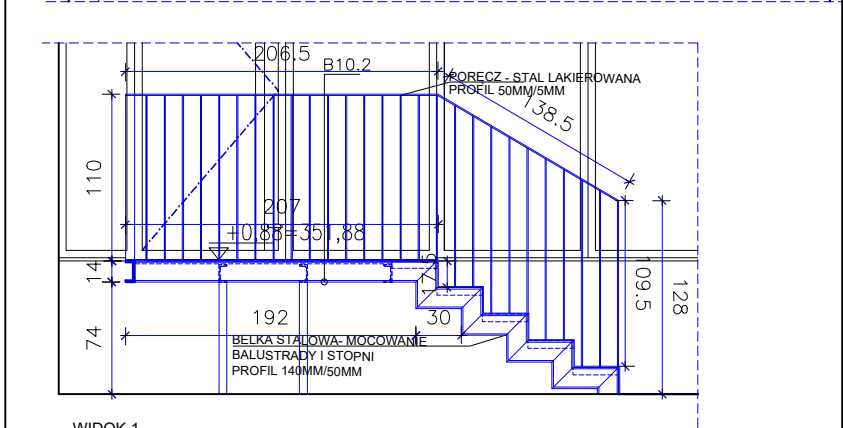
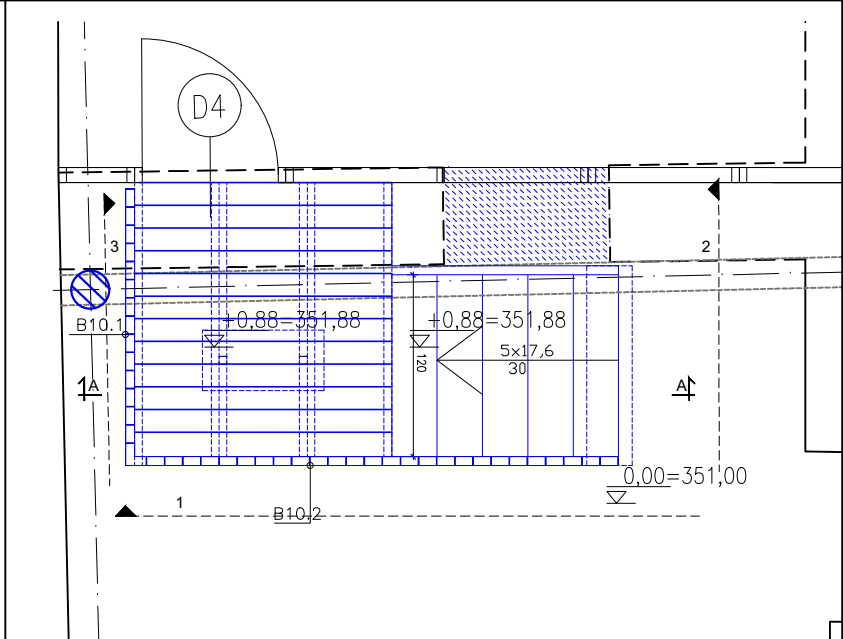
ILOŚĆ	1
-------	---

RAZEM	1
-------	---

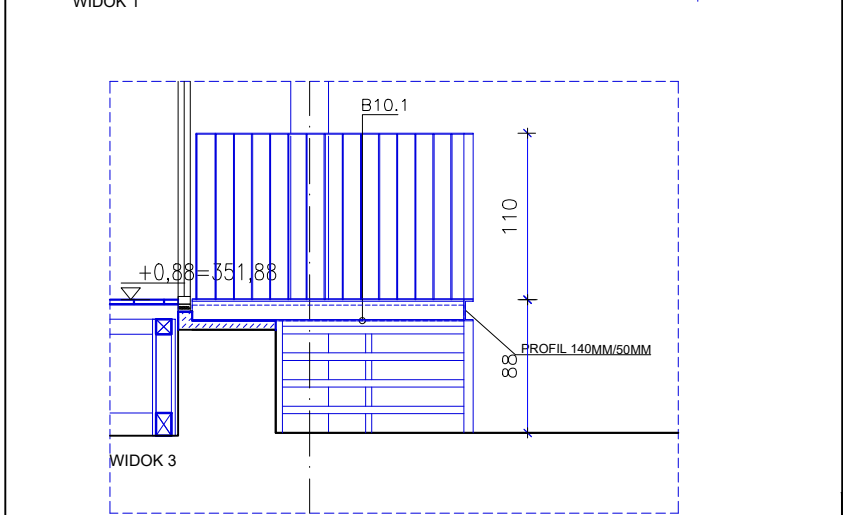
UWAGI	
-------	--

KOLOR	
-------	--

B10



WIDOK 1



WIDOK 3

1

architektoniczna
pracownia projektowa
31-939 Kraków, os.Kolorowe 12/19

Inwestor:	MUZEUM - NADWIŚLAŃSKI PARK ETNOGRAFICZNY w WYGIEŁZOWIE i ZAMEK LIPOWIEC	
-----------	---	--

Projekt:	REMONT I PRZEBUDOWA ZAMKU LIPOWIEC WRAZ Z PRZEBUDOWA BUDYNKÓW GOSPODARCZYCH PODZAMCZA NA PUNKT OBSŁUGI TURYSTÓW Z INFRASTRUKTURĄ WEWNĘTRZNA	RYS.500.2
----------	---	-----------

Adres:	32-551, Babice, ul. Podzamcze 1
--------	---------------------------------

Temat rys.:	ZESTAWIENIE BALUSTRADY W POT	
-------------	---------------------------------	--

Faza/branža:	PW / ARCHITEKTURA	Skala:	1:50
--------------	-------------------	--------	------

Projektant:	mgr inż. arch. Maciej Kozub RP Upr.443/94	Data:	IV.2016
-------------	---	-------	---------

Sprawdzający:	mgr inż. arch. Marian Mikołajski RP Upr.235/94	
----------------------	--	--

Współpraca:	mgr inż. arch. Agnieszka Praska	
--------------------	---------------------------------	--

RYS.500.2

--	--

Skala:	1:50
--------	------